

INDIAN SCHOOL AL WADI AL KABIR



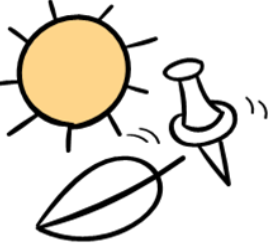
DEPARTMENT OF EVS

2021 - 2022



ROCKS AND MINERALS WORKSHEET

Resource Person –Ms. Sudha Pankaj



INDIAN SCHOOL AL WADI AL KABIR

DEPARTMENT OF EVS [2021 – 2022]

LESSON: ROCKS AND MINERALS

WORKSHEET

RESOURCE PERSON: MS. SUDHA PANKAJ

NAME: _____ CLASS: V SEC: _____ DATE: _____

I. Use the given clue to identify the answer.

1. It is the mineral from which metal can easily be extracted.

2. It is formed when magma cools slowly below the Earth's surface.

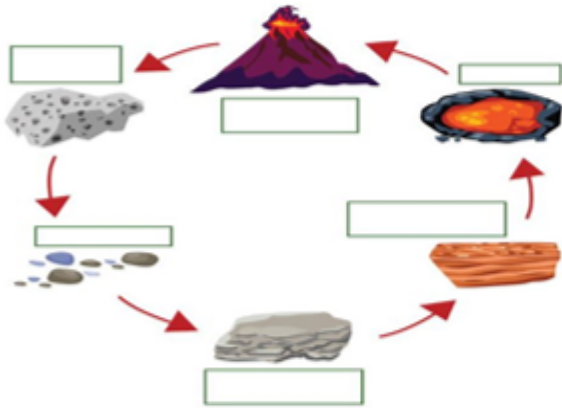
3. It is a limestone rock the teachers use it to write on the blackboard.

4. It is pronounced as 'nice'. It is formed when the granite rock is subjected to heat or pressure.

5. It is formed as a hard rock (metamorphic rock) that it scratches steel.

6. It is very hard and found in the form of crystals and its cut and polished into beautiful stones.

II. V. Label the different stages of the 'Rock Cycle' in the diagram given below



ISWK /Department of EVS/2021-2022/Class V



II. Give reasons for the following statements.

1. Minerals are building blocks of rocks.

2. Granite may be grey, white or pink in colour.

3. Pumice looks like a sponge with holes and pockets in it.

III. Choose the correct option for the statements given below and write it in the space provided.

a) **Assertion:** All rocks on the Earth are made up of minerals.

Reason: A mineral from which metal can easily be extracted is ore.

1. Both A and R are true and R is correct explanation of the assertion
2. Both A and R are true but R is not the correct explanation of the assertion.
3. A is true but R is false.
4. A is false but R is true.

b) **Assertion:** Pumice looks like a sponge with holes and pockets in it.

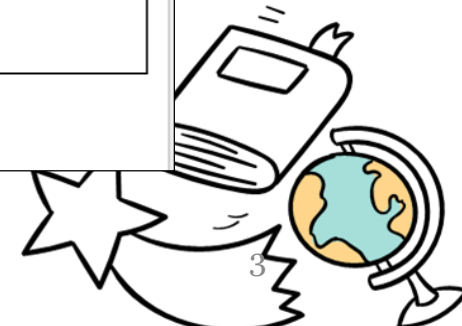
Reason: When frothy lava cools quickly on the Earth's surface, gases in the froth remain trapped inside.

1. Both A and R are true and R is correct explanation of the assertion
2. Both A and R are true but R is not the correct explanation of the assertion.
3. A is true but R is false.
4. A is false but R is true.

IV. Complete the details in the table given below

	Metal	Ore	Uses
1.	Zinc		
2.	Aluminium		
3.	Iron		
4.	Copper		

ISWK /Department of EVS/2021-2022/Class V





INDIAN SCHOOL AL WADI AL KABIR

DEPARTMENT OF EVS [2021 – 2022]



LESSON: ROCKS AND MINERALS

WORKSHEET

RESOURCE PERSON: MS. SUDHA PANKAJ

NAME: _____ CLASS: V SEC: _____ DATE: _____

I. Use the given clue to identify the answer.

1. It is the mineral from which metal can easily be extracted.

Ore _____

2. It is formed when magma cools slowly below the Earth's surface.

Granite _____

3. It is a limestone rock the teachers use it to write on the blackboard.

Chalk _____

4. It is pronounced as 'nice'. It is formed when the granite rock is subjected to heat or pressure.

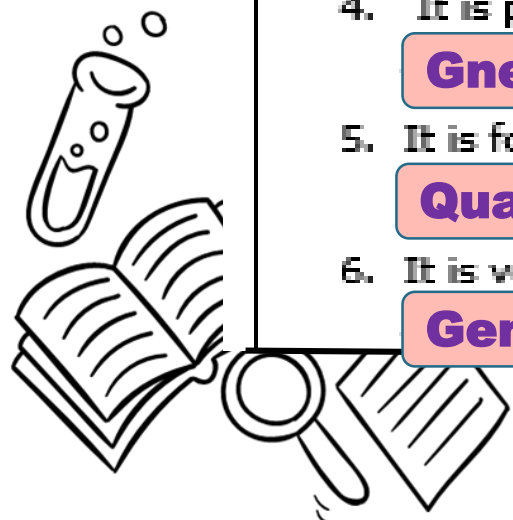
Gneiss _____

5. It is formed as a hard rock (metamorphic rock) that it scratches steel.

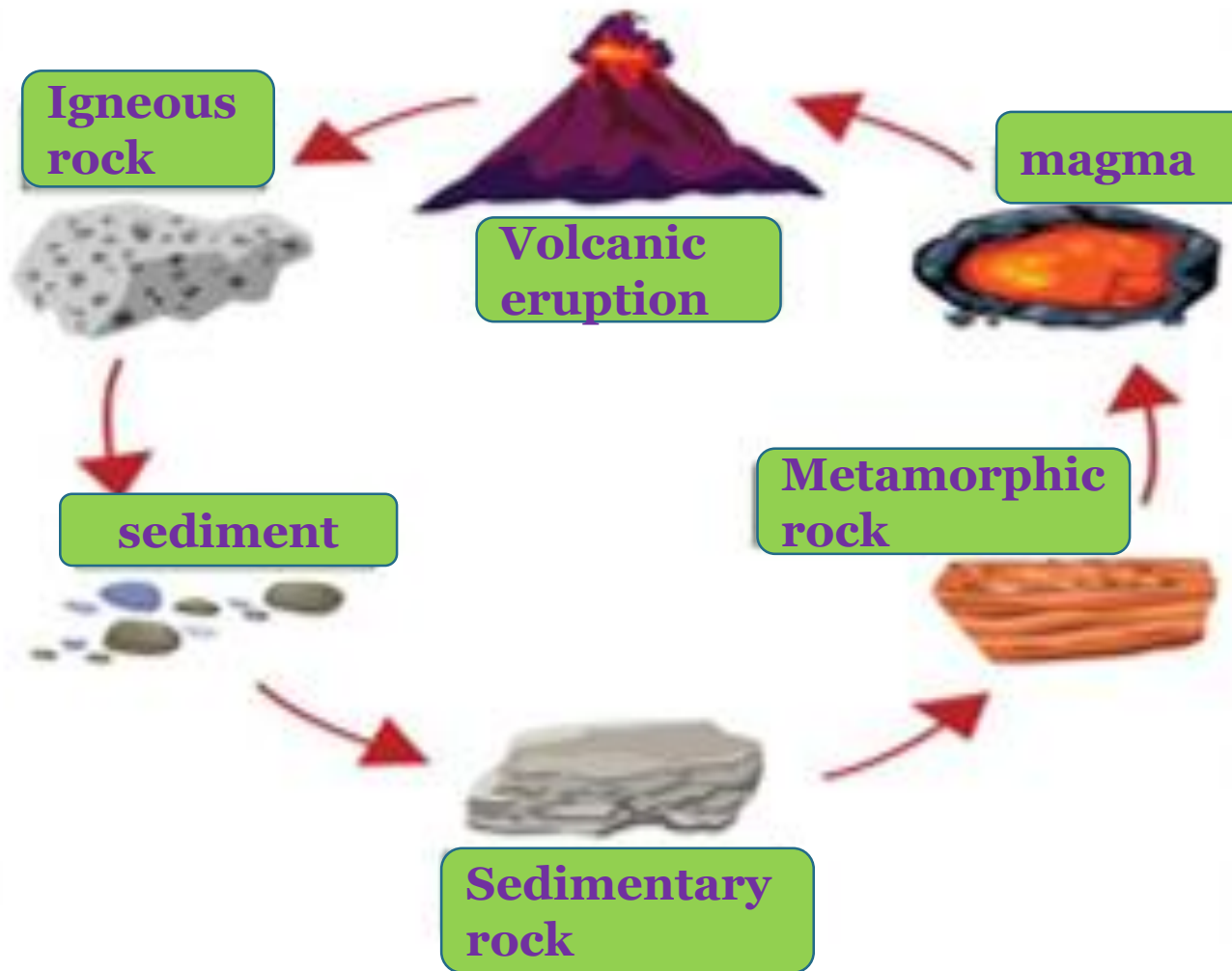
Quartzite _____

6. It is very hard and found in the form of crystals and its cut and polished into beautiful stones.

Gemstone _____



II. V. Label the different stages of the 'Rock Cycle' in the diagram given below





II. Give reasons for the following statements.

1. Minerals are building blocks of rocks.

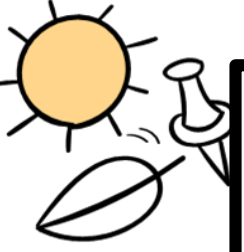
Rocks are made up of naturally occurring grain like structures called minerals. Some rocks contain only one mineral, others may contain many minerals.

2. Granite may be grey, white or pink in colour.

Granite may be grey, white or pink in colour depending upon the amount of the mineral feldspar (any of a group of aluminosilicate minerals that contain calcium, sodium, or potassium) in it.

3. Pumice looks like a sponge with holes and pockets in it.

It is formed when frothy lava cools quickly on the Earth's surface and the gases in the froth remain trapped inside. Pumice, therefore, looks like a sponge with holes and pockets in it.



III. Choose the correct option for the statements given below and write it in the space provided.

a) Assertion: All rocks on the Earth are made up of minerals.

Reason: A mineral from which metal can easily be extracted is ore.

1. Both A and R are true and R is correct explanation of the assertion
2. Both A and R are true but R is not the correct explanation of the assertion.
3. A is true but R is false.
4. A is false but R is true.

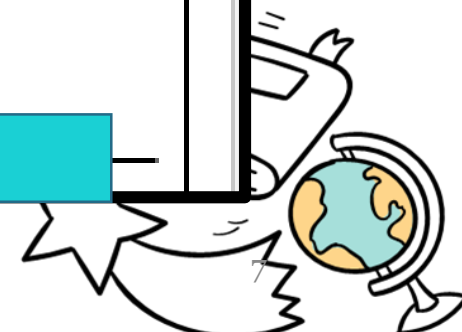
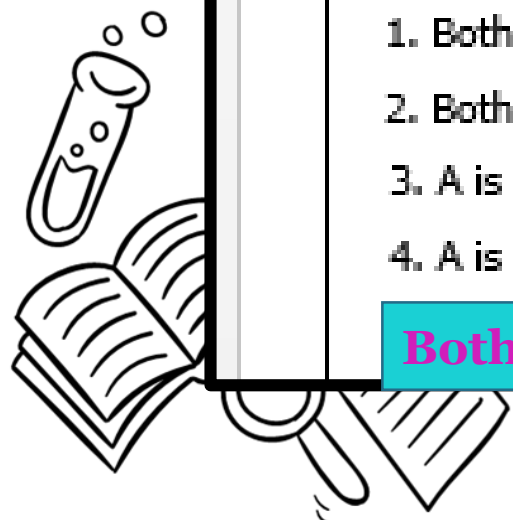
Both A and R are true but R is not the correct explanation of the assertion.

b) Assertion: Pumice looks like a sponge with holes and pockets in it.

Reason: When frothy lava cools quickly on the Earth's surface, gases in the froth remain trapped inside.

1. Both A and R are true and R is correct explanation of the assertion
2. Both A and R are true but R is not the correct explanation of the assertion.
3. A is true but R is false.
4. A is false but R is true.



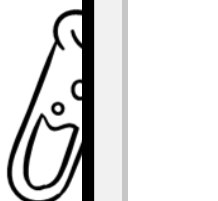
Both A and R are true and R is correct explanation of the assertion

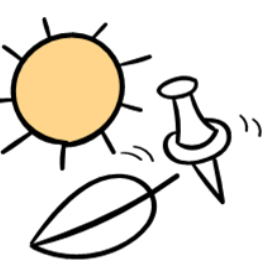




IV. Complete the details in the table given below

	Metal	Ore	Uses
1.	Zinc	Calamine	Cosmetics , Electrical appliances
2.	Aluminium	Bauxite	Foils , Window frames
3.	Iron	Haematite	Vehicles , tools, buildings
4.	Copper	Copper pyrite	Electric wires, utensils



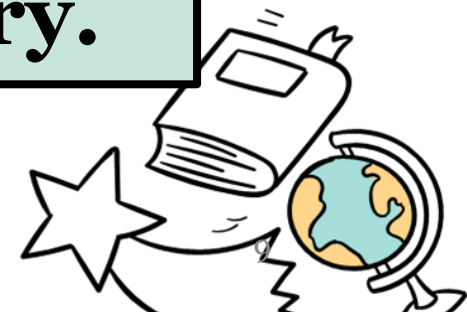


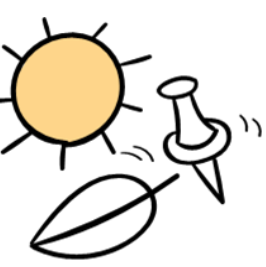
VALUE CORNER

Nitika got a diamond ring in the corridor of her school. She picked up the ring and gave to her principal. The principal appreciated Nitika.

1. What is a diamond?

A. Some minerals are very hard and are found in form of crystals. They are cut and polished into beautiful stones called gemstones. Diamond is also one such gemstone which is used in making jewelry.





2. Why did the principal appreciate Nitika?

A. Principal appreciated Nitika for her honest behavior. Honesty helps in developing good attributes like truthfulness, discipline and moral integrity.

